



Proudly Made
In America

Mx-OPUS-ML10VHB

FIXTURE INTEGRATED 0-10V LIGHTING CONTROL FOR DIM-TO-OFF DRIVERS

OVERVIEW:

Magnum's fixture integrated Mx-OPUS-ML10VHB node enables any lighting manufacturer with a high bay lighting offering to deliver simple, fully connected fixtures. The form factor includes a digital PIR and ambient light sensing for daylight harvesting applications as well as very accurate occupancy detection. Easy to integrate into a high bay fixture through an available half inch knock out, OPUS node bi-directionally communicates data to and from the lighting control network.

DESCRIPTION:

The Mx-OPUS-ML10VHB is designed to fit into most high bay LED lighting fixtures. The digital PIR sensor is rated for ceilings up to 39 feet. Although configurable for advanced settings, the Mx-OPUS-ML10VHB is designed for plug and play applications. It is flexible enough for both localized control as well as software driven enhancement and also integration for BACnet through Magnum's eBox (Mx-EBOX). The critical data points provided from this node includes occupancy status, light levels and light status.

*Subject to change

Magnum Energy Solutions, LLC



Proudly Made
In America

Mx-OPUS-ML10VHB

FIXTURE INTEGRATED 0-10V LIGHTING CONTROL FOR DIM-TO-OFF DRIVERS

FEATURES:

- Full digital passive infrared for occupancy sensing
- Powered from driver or any available 12-24VAC / 12-36VDC source
- Wireless communication
- Daylight harvesting
- Compatible with 0-10V, dim-to-off LED drivers
- Remotely configurable

TECHNICAL DATA:

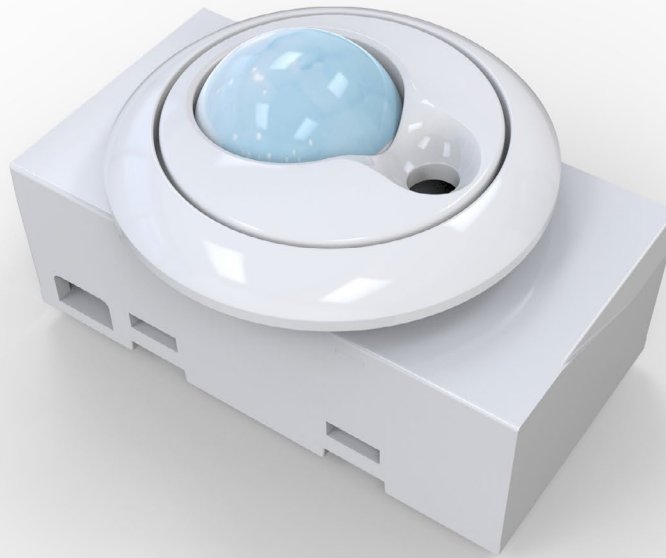
| | |
|-----------------------------------------|--------------------------------------------------------------------------------------------------------------------------------|
| Part Numbers (Frequency Dependent) | M9-OPUS-ML10VHB (902 MHz - North America) M8-OPUS-ML10VHB (868 MHz - Europe and China) MJ-OPUS-ML10VHB (928 MHz - Japan) |
| Motion Sensing | Digital Passive IR |
| Detection Distance | 12 m (39.3696 ft) |
| Detection Range (Horizontal x Vertical) | 102° x 92° |
| Detection Zone | 92 Zones |
| Ambient Light Sensing | 0-94.8 FC (0-1020 LUX) Photo IC type |
| Operating Temperature | 32° - 122°F (0° - 50°C) |
| Input Voltage | 12-24VAC /12-36VDC |
| Output | 0-10VDC @ 30mA (sinking driver) 5mA (sourcing driver) |
| Standby Power | < 1W |
| Wireless Protocol | EnOcean Wireless Protocol |
| Wireless Range | 150 ft (50 ft-150 ft typical) / 45.72 m (15.24 m - 45.72 m) |
| Certifications | IEC 62386-101:2014 IEC 62386-103:2014 CE UL Listed |



*Subject to change

Magnum Energy Solutions, LLC

-2-

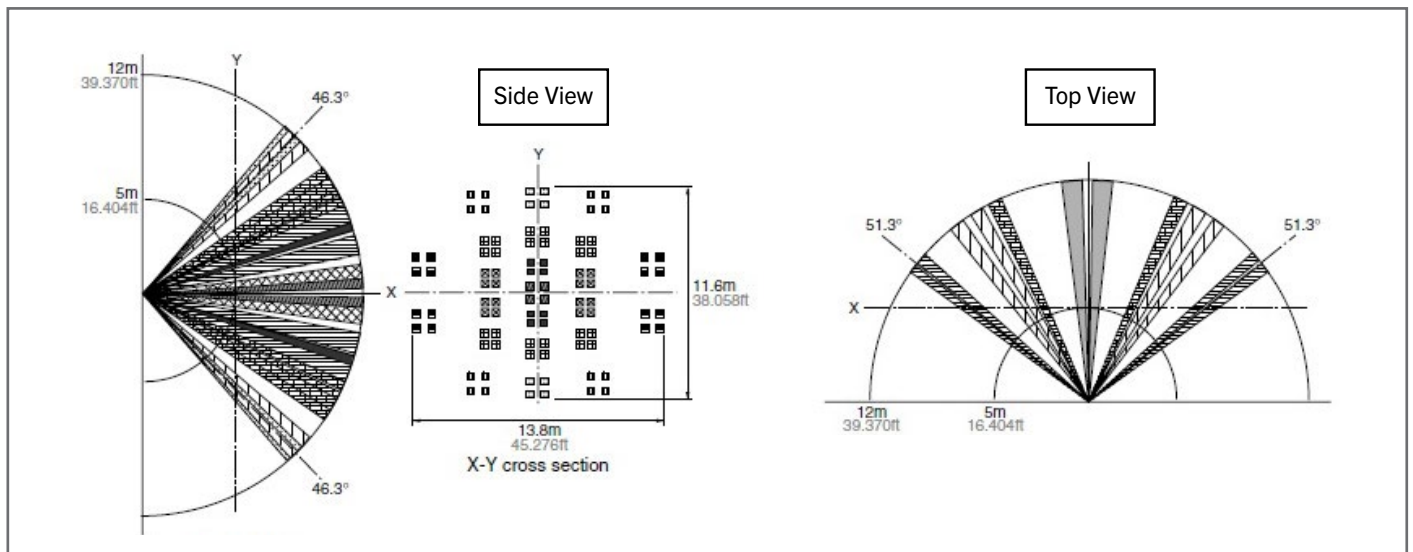


Proudly Made
In America

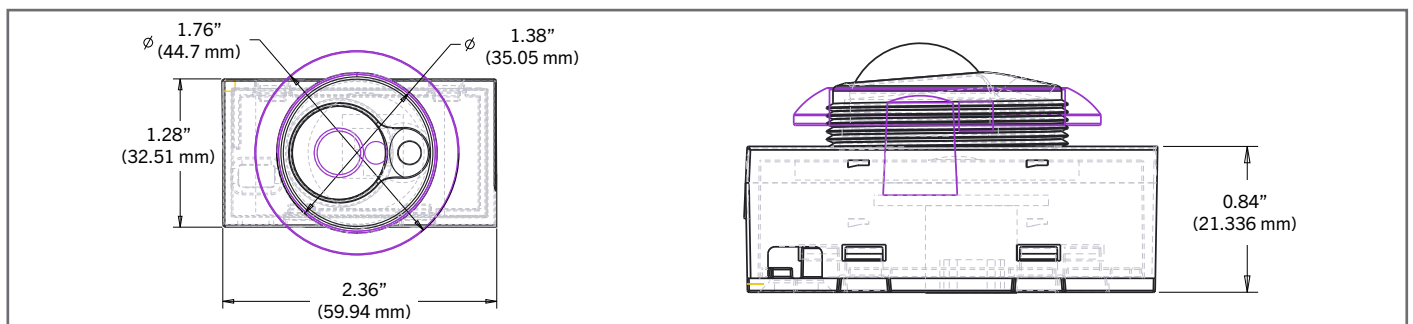
Mx-OPUS-ML10VHB

FIXTURE INTEGRATED 0-10V LIGHTING CONTROL FOR DIM-TO-OFF DRIVERS

DETECTION PERFORMANCE:



DIMENSIONS:



*Subject to change

Magnum Energy Solutions, LLC

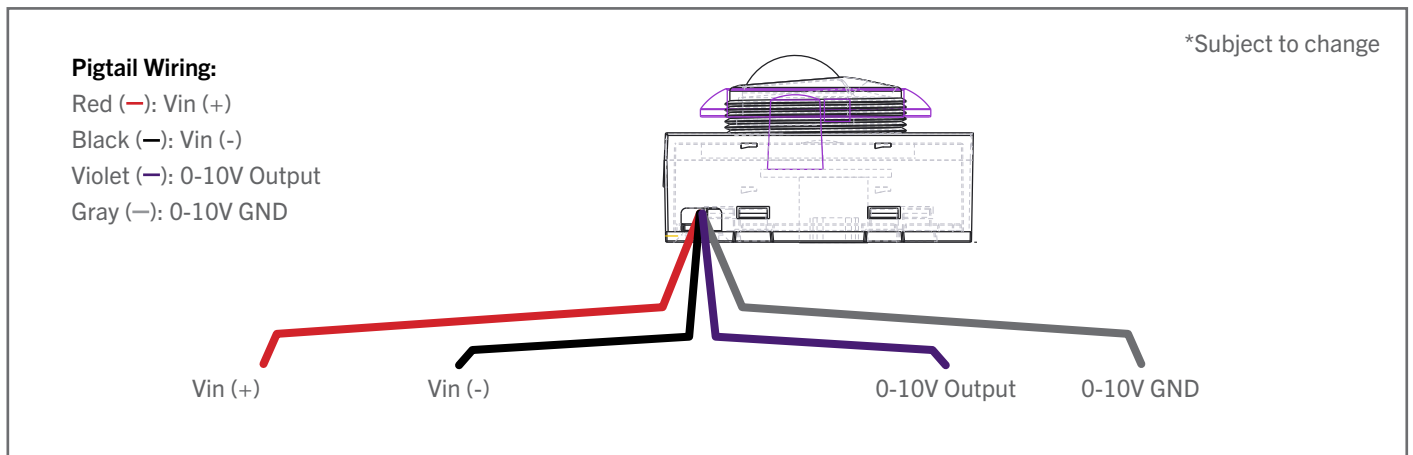


Proudly Made
In America

Mx-OPUS-ML10VHB

FIXTURE INTEGRATED 0-10V LIGHTING CONTROL FOR DIM-TO-OFF DRIVERS

WIRING DIAGRAM:



For tutorial videos regarding the OPUS product line, please visit MES on [YouTube](#).