

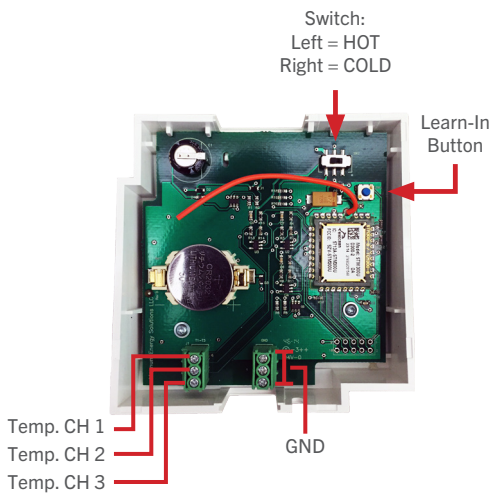
# 3 Channel Temperature Sensor

## Mx-RTS3



### Application

Solar-powered sensors, with an intelligent transmission management, are used to measure the temperature, and transmit this information wirelessly using the non-proprietary EnOcean wireless protocol. Special indoor solar cells collect the power required for operation and data transfer from ambient light. In unlit periods, maintenance-free gold-cap capacitors continue to feed the transmitter. The wireless transmission technology gives you a great deal of freedom in choosing the installation location.



### Technical Data

Function	3 Channel Temperature Sensor
Power Supply	Solar-powered via internal energy storage unit.
Interfaces	<ul style="list-style-type: none"> <li>- Wireless telegram: EnOcean wireless telegram.</li> <li>- Custom MES VLD Telegram.</li> <li>- Frequency: 868 MHz, 902 MHz &amp; 928 MHz</li> <li>- Operating Range: Approx. 30 m in buildings (depending on building structure)</li> <li>- Duty Cycle: &lt; 0.4%</li> <li>- Transmission interval of 120 seconds if there is a change in temperature or if manually operated (Adjustable)</li> </ul>
Transmission Power	< 10 mW
Illumination Strength	Min. 150 lx, constant.
Measuring Range	HOT: 0°C to 70°C COLD: -40°C to 20°C
Ambient Conditions	0°C to 50°C (humidity non-condensing)
Housing	Plastic Housing, RAL9010 (pure white)
Degree of Protection	IP20
Weight	0.10 kg
Dimensions	WxHxD mm 82.5 x 82.5x 30

### Part Numbers

(Frequency Dependant)

**M9-RTS3** (902 MHz - North America)  
**M8-RTS3** (868 MHz - Europe and China)  
**MJ-RTS3** (928 MHz - Japan)

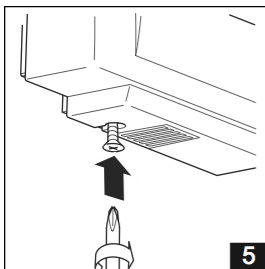
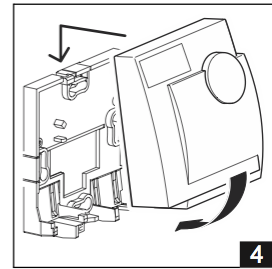
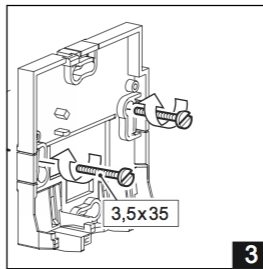
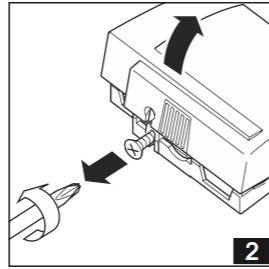
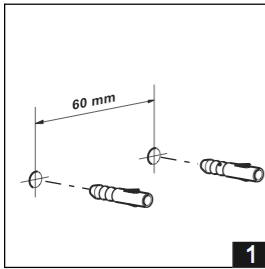


**MAGNUM**  
ENERGY SOLUTIONS

# 3 Channel Temperature Sensor

## Mx-RTS3

### Wall Mounting:



### Flush Mounting:

